

HIGICC July 2018 Newsletter



NEWSLETTER / July 2018

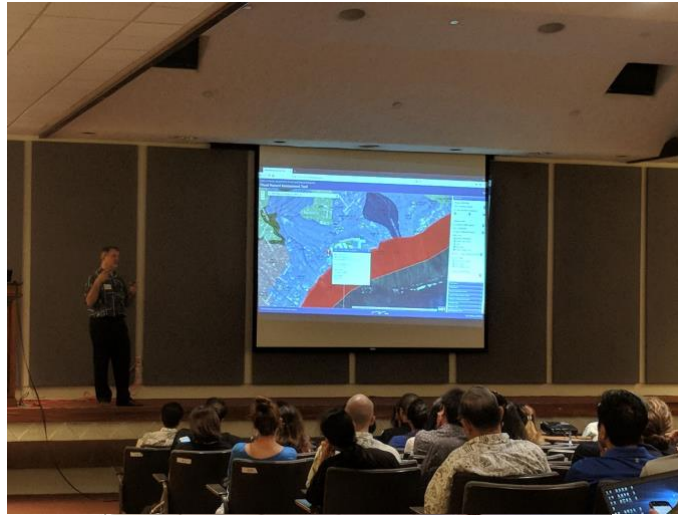
President's Note on the Annual Meeting

The HIGICC annual meeting and reporting has been rescheduled to the fall of each year instead in June as has been the past practice. This change will allow for better fiscal reporting. At this point no date or venue has been chosen. We will be setting it up and making an announcement soon. Hope you can make it !!!



HIGICC Oahu Expo

On June 22nd, 2018 the HIGICC Expo was held at the State Capitol Auditorium. This event has a great success with over 150 people in attendance. There was a great set of speakers who gave a wide range of presentations. Interesting topics for using UAV for the Kilauea eruption mapping to open source GIS and more. In addition, two large jars of Brown Tree Snakes got on stage too, thanks Department of Agriculture, Plant Quarantine Branch. A great time was had by all. Thanks you to everyone that attended.



HIGICC Board of directors Elections

Thanks to the many people who put their name in for a position of the HIGICC Board of Directors for the 2018-2020 term. We had a very good group of candidates, so the choices were hard to make. There were six positions to fill. As you may be aware, the HIGICC board is comprised of 11 seats. The elections are staggered so that each year only half the board is up for election to help promote stability to the organization.

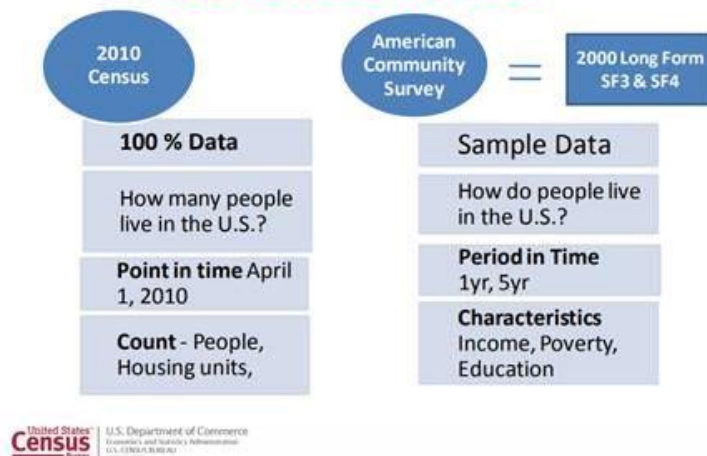
The oncoming board members are: Ted Kwok, Rhonda Maronn, Stephanie Saephan, Joan Delos Santos, Gretchen Chicques, and Sam Aruch.



Census Workshop

On May 15th, the state of READ (research and economic analysis division) invited Eric Coyle to speak about the United States Census Bureau data collection, availability and a new interactive map service. He went over how data is collected by the American Community Survey (ACS), The difference between ACS Data and the Census data and products:

2010 Census vs. ACS



He also covered how the census selects their statistical areas, accessing TIGER/ACS Data at census.gov/geo/maps-data/data/tiger, and their interactive web application map: Census Business Builder (CBB) service found here:

<https://census.gov/data/data-tools/cbb.html>

His presentation and other event details can be found on HIGICC.org

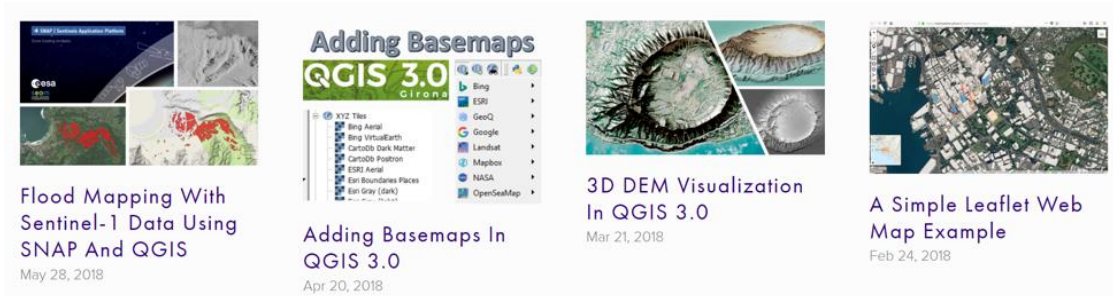
OPEN.GIS.LAB

If you are interested in open source GIS and want to know more, check out open.gis.lab – a local blog and user group based in Honolulu. On the website, you'll find short tutorials based on open source GIS with emphasis on using Hawaii related data, such as flood mapping on Kauai using Sentinel-1 data and SNAP and QGIS.

Interested in using open source with ESRI software? Then check out the [ESRI GitHub](https://github.com/ESRI) page, where you'll find many open source projects developed by ESRI to integrate with other open source software – an example is ESRI Leaflet which allows ArcGIS services to be used in Leaflet. See [A Simple Leaflet Web Map Example](https://open.gis.lab/a-simple-leaflet-web-map-example) on open.gis.lab.

If you are interested in helping to develop an open source user group here in Hawaii (e.g. by hosting a meeting) or have any questions, please contact Stephanie Saephan via email

stephanie@opengislab.com



New Hawai'i Elevation Service

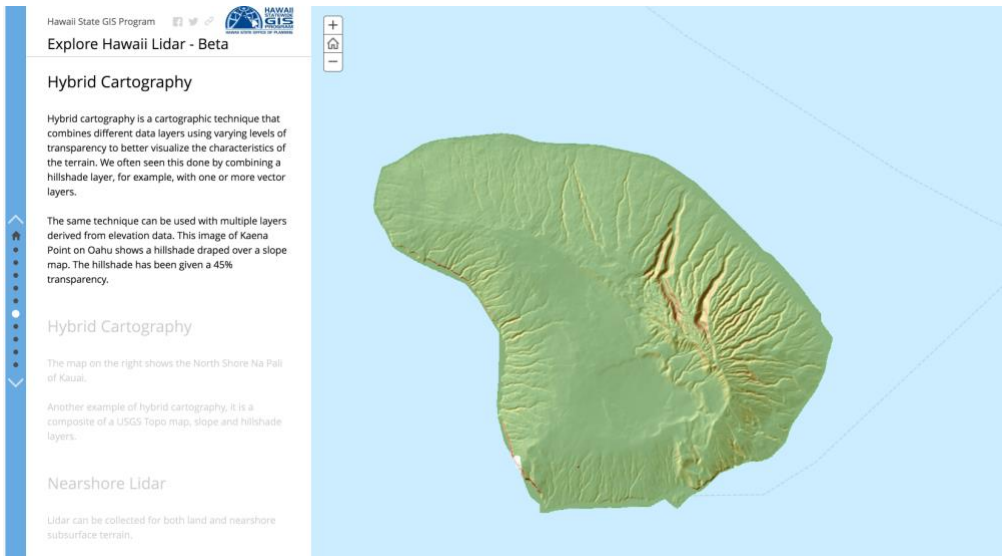
The [Hawaii Statewide GIS Program](#) unveiled a new [Elevation Service](#) at the HIGICC Expo that can be used to download Lidar data as well as Digital Surface Models and Digital Terrain Models (DSM's and DTM's) derived from the Lidar data. The GIS Program, with funding from the State CIO's office and assistance from Esri, gathered all known Lidar datasets in Hawaii created from 1999 through 2017 to create the service.

The data is also available for rendering in ArcGIS Online through the following REST services:

http://geodata.hawaii.gov/arcgis/rest/services/SoH_Imagery/Hawaii_DSM/ImageServer

http://geodata.hawaii.gov/arcgis/rest/services/SoH_Imagery/Hawaii_DTM/ImageServer

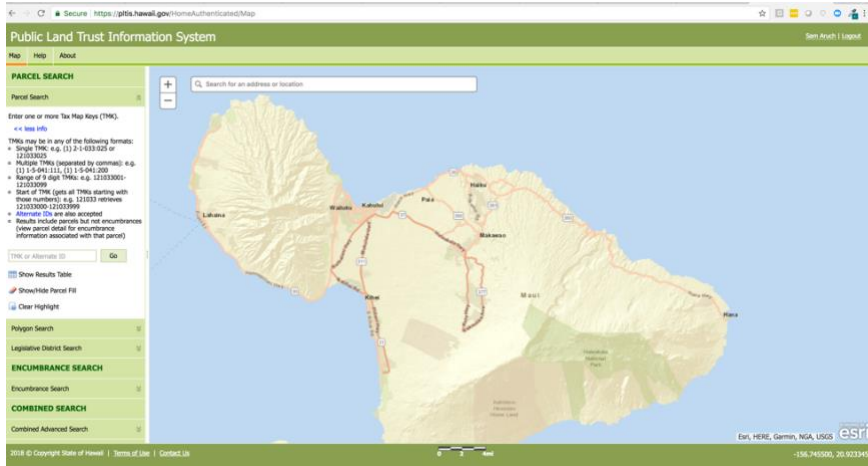
For more information, please contact the GIS program at gis@hawaii.gov.



Public Land Trust Information System

The PLTIS is the State of Hawai'i's first centralized, web-based inventory of all State and County owned lands, including encumbrances issued over these lands. Developed and administered by the DLNR Land Division, the PLTIS was developed to satisfy the requirements of Act 54 which mandates the establishment of a comprehensive information system to inventory and maintain information about the lands of the public land trust as described in the Admission Act [section 5(f)] and the Hawai'i State Constitution (article XII, section 4).

The data in the PLTIS is derived from approximately forty (40) disparate State, County and third-party sources. The PLTIS also includes a GIS interface that allows users to geographically visualize the parcel and encumbrance data. New users can register at <https://pltis.hawaii.gov>



Sponsors

Mahalo to our sponsors. For sponsorship info [click here.](#)



